

# **BACK TO THE FUTURE: CASE STUDIES OF SCENARIOS**

WWF and Natural Capital Project, ACES Workshop

December 8, 2014

Amy Rosenthal

Nasser Olwero

Nirmal Bhagabati

Adam Dixon

Emily McKenzie

Gregory Verutes

# **SCENARIOS IN PRACTICE**

Cases from Belize, Tanzania, and Cambodia

# ONE EXAMPLE

## DEVELOPING SCENARIOS FOR BELIZE

Coastal management  
Belize

### OUR GOALS

- Understand and map current uses,
- Map and value coastal and marine ecosystem services now and in the future,
- Create an ecosystem-based plan for multiple uses.

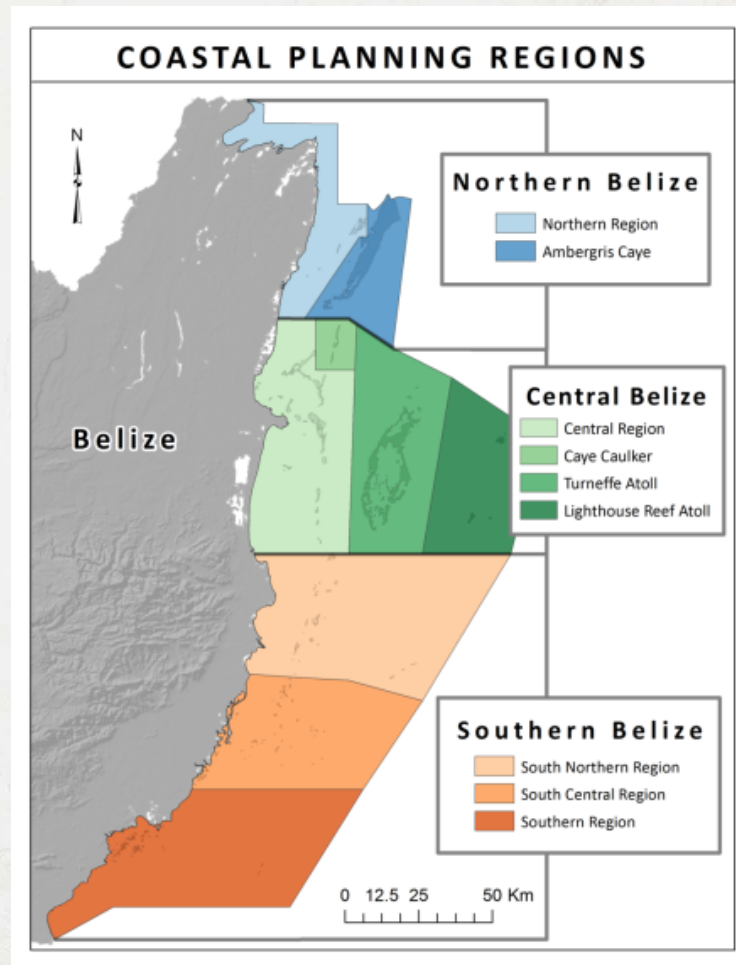


# SCENARIO GOALS

***FRAMING QUESTION:*** *How will alternative development and conservation strategies affect key ecosystem services for Belize?*

- **Understand** how human activities affect ecosystem services now and in the future.
- **Compare** alternative planning options and select one approach.
- **Engage stakeholders** to inform the planning process and learn from results.
- **Provide evidence** that sound management best achieves goals.
- Foster planning for **improved environmental and economic outcomes**.
- **Set a foundation** for future planning and monitoring changes.

# SCIENTISTS POLICYMAKER S STAKEHOLDER S



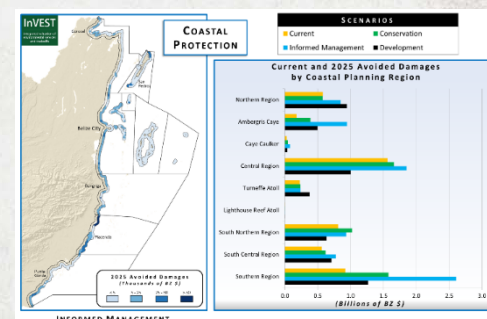
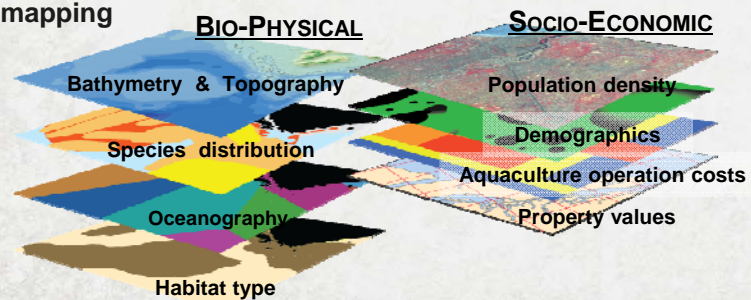


**Stakeholder consultation**

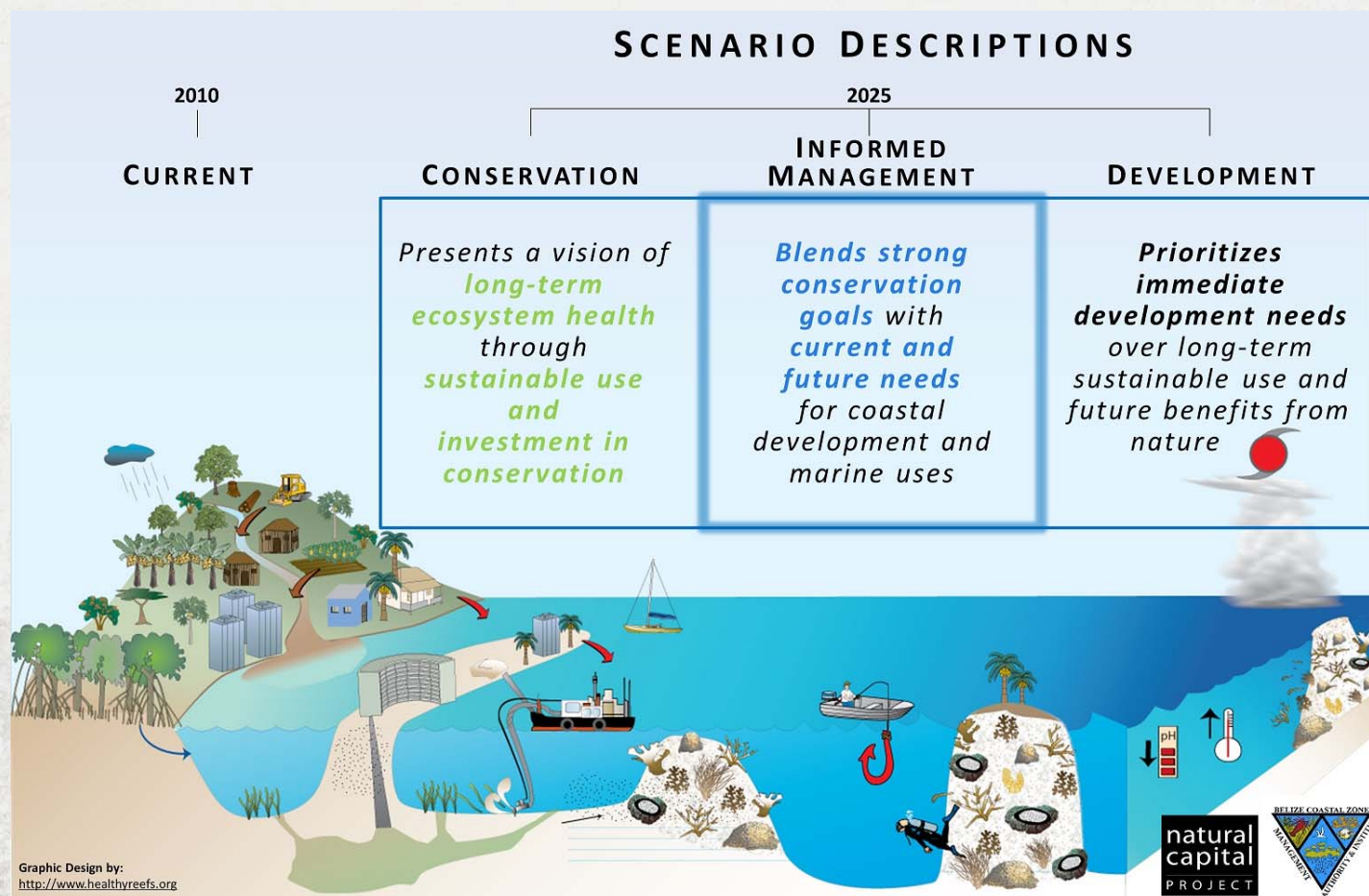


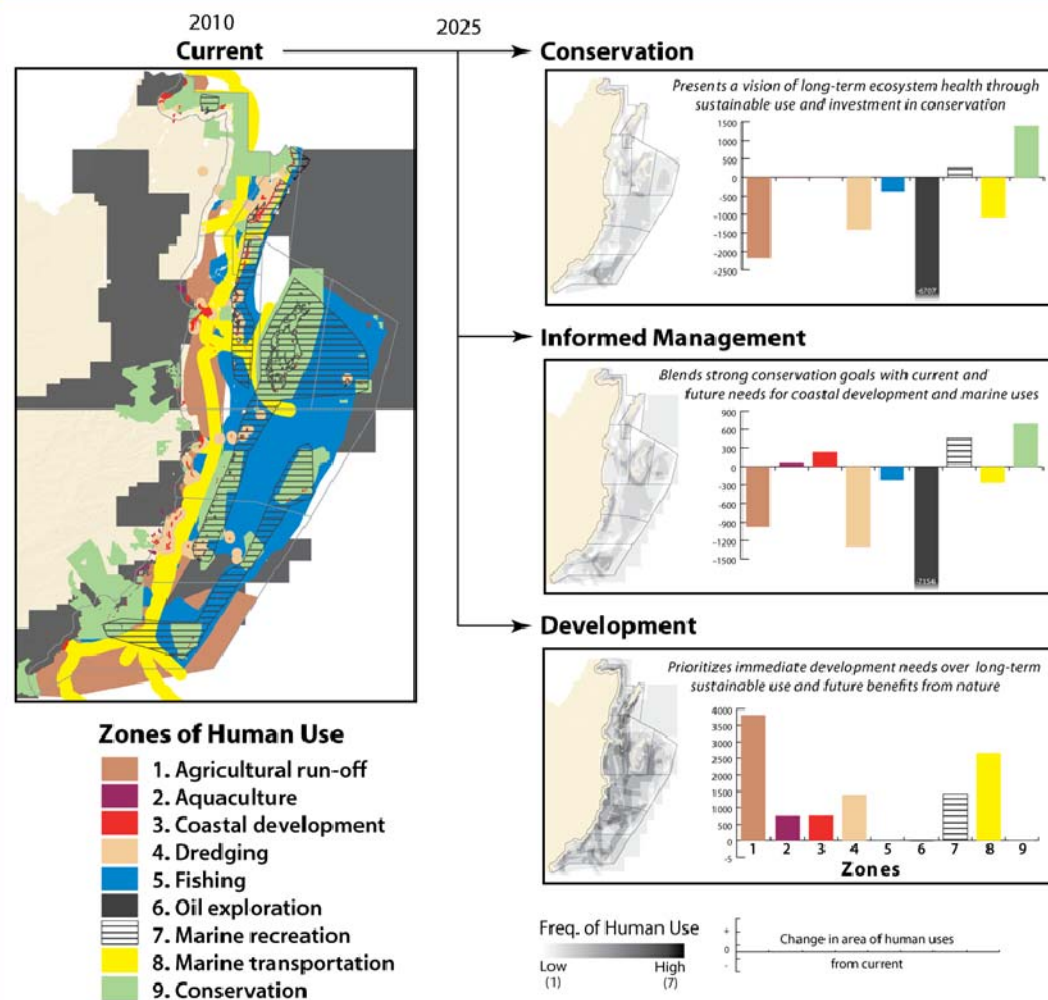
**Ecosystem service  
modeling**

**Data gathering & mapping**



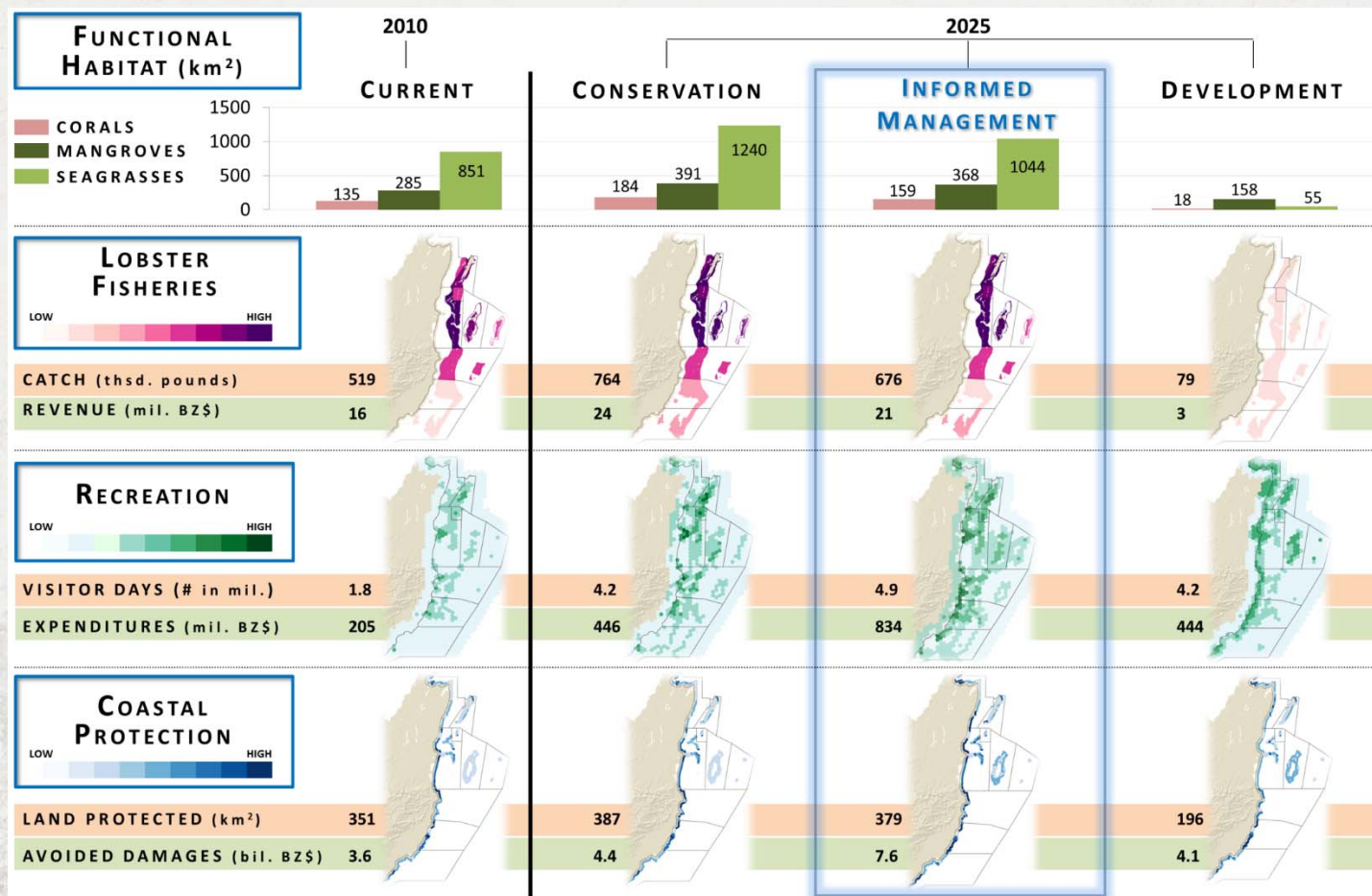






Arkema et al.  
in press





In Waite  
et al. 2014

# ONE EXAMPLE

## DEVELOPING SCENARIOS FOR TANZANIA

### OUR GOALS

- Advocate conservation by demonstrating nature's value
- Demonstrate need for REDD and PWS policies
- Suggest where REDD and PWS pilots feasible

REDD+ and Payments  
for Watershed  
Services Tanzania



# SCENARIO GOALS

**FRAMING QUESTION:** *Where are REDD and PWS pilots most likely to be economically viable compared with other land-use choices?*

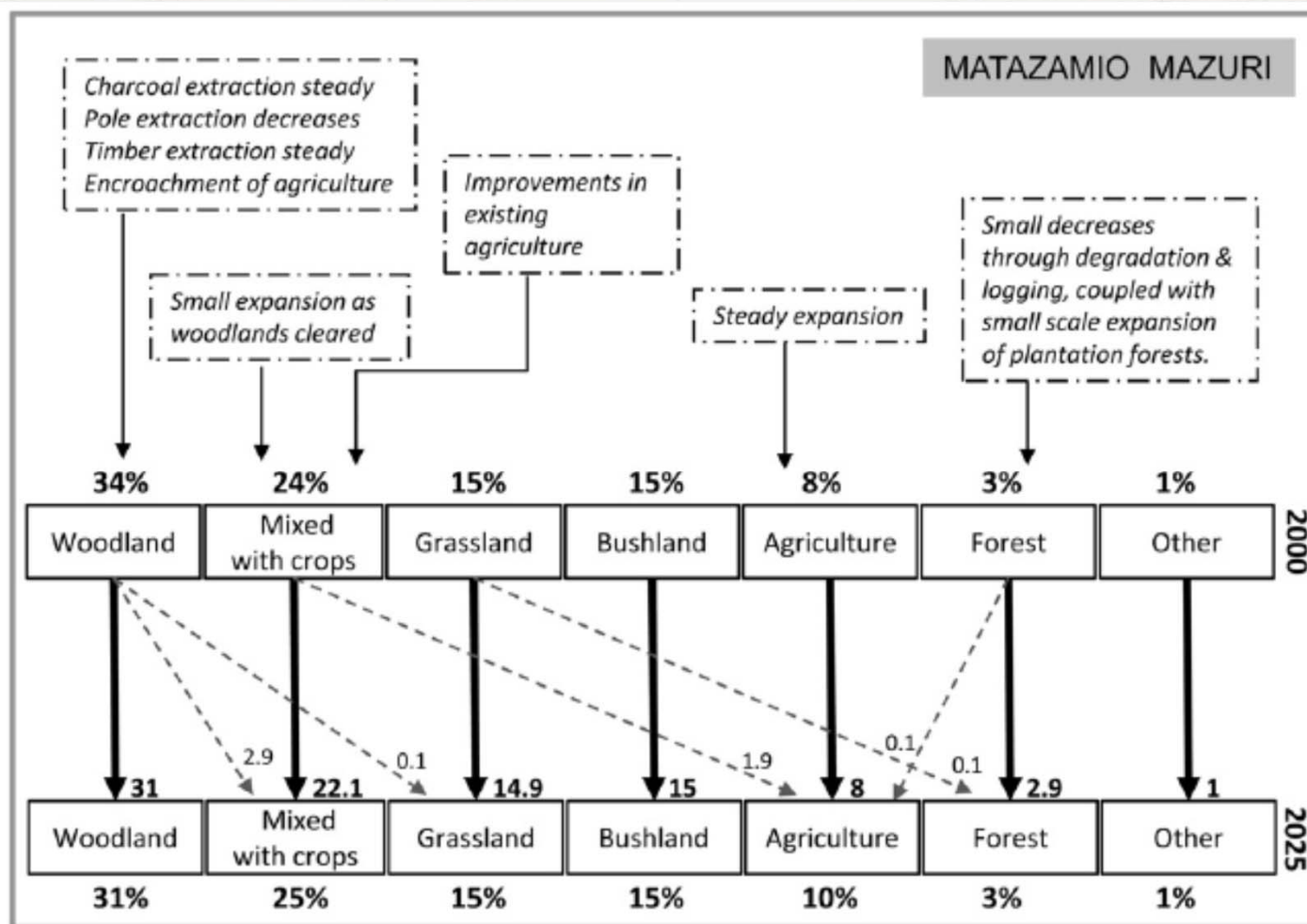
- **Explore** how relevant drivers might change in the future
- **Elucidate** how land-use changes affect ES delivery
- **Ground scenarios** in policy and practical realities
- **Engage stakeholders and experts** in process to build support and improve data
- **Demonstrate** the importance of ES and the power of ES maps



## METHODS

- Reviewed sectoral & national policies
- Interviewed decision-makers & stakeholders
- Held many participatory workshop
  - To identify drivers, create storylines, develop rules
- Converted rules into maps with GIS



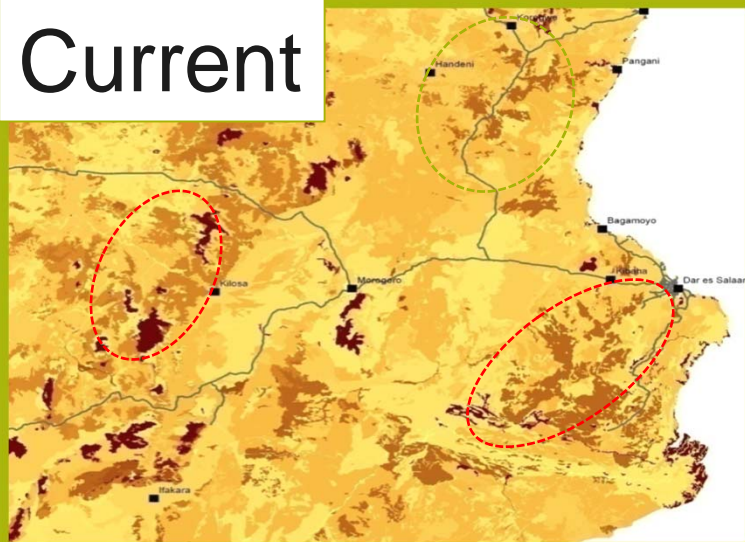


Swetnam et al.  
2011

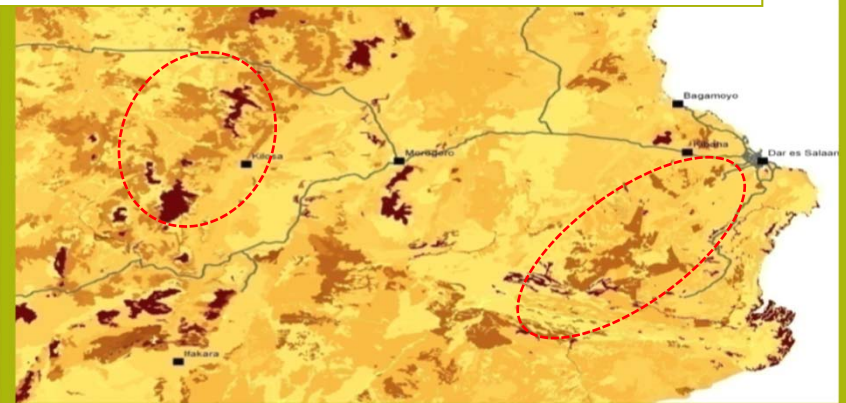
# RESULTS INFORM REDD INVESTMENT

VALUING THE ARC

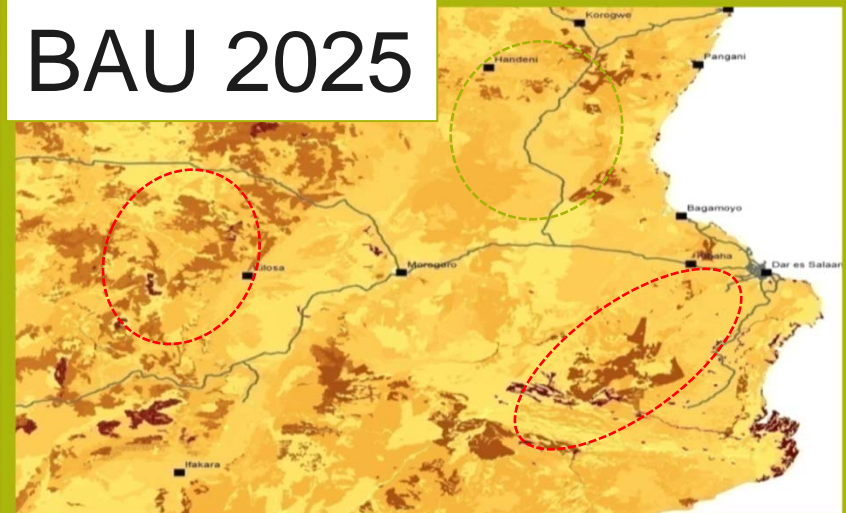
Current



Matazamia 2025



BAU 2025





# ONE EXAMPLE

## DEVELOPING SCENARIOS FOR CAMBODIA

Land use planning &  
benefits sharing  
Cambodia

### OUR GOALS

- Advocate conservation by demonstrating nature's value
- Illustrate how ecosystem services affected by different policies
- Inform benefits-sharing mechanisms

# SCENARIO GOALS

***FRAMING QUESTION:*** *How might forest ecosystem services and wildlife habitat change with different land uses, and what land-use plans could conserve forests?*

- **Explore** how the landscape might change in the future
- **Conduct a learning process** with stakeholders support land-use planning process
- **Understand** how land-use changes affect ES delivery
- **Consider** new planning options that provide multiple ecosystem services



# METHODS

## TWO STAKEHOLDER WORKSHOPS

natural  
capital  
PROJECT





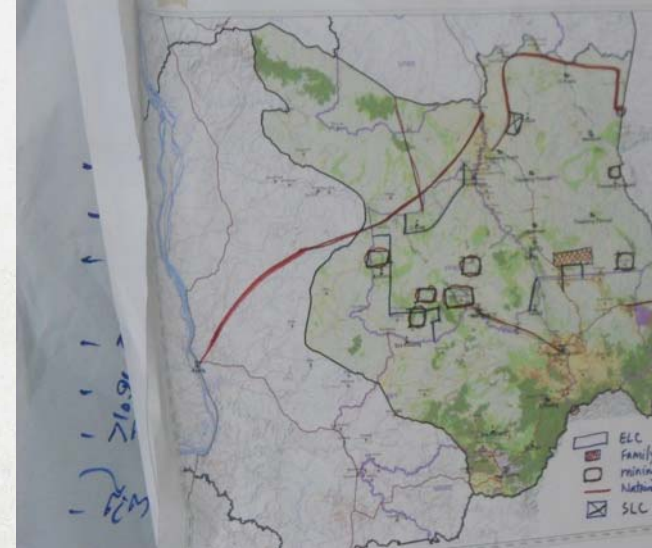
## GREEN SCENARIO

- **TECHNOLOGICAL INNOVATION** (sustainable resources, security, health, better life, less, more, better, more) and quality of living
- **TOURISM (ECO-TOURISM)**
- **GOOD GOVERNANCE** (Transparency, clear / transparent management plans, increased capacity and skills, empowerment of women and communities) and transparency
- **EDUCATION** (e.g. higher salary) has improved
- **REDD**
- **LAND USE PLANNING** (land reorganization)
- **ECONOMIC GROWTH** (industrial, subsidies, & to more basic practices)
- **COMMUNITY FORESTS**
- **TRADITIONAL KNOWLEDGE** (HTFP)
- **Infrastructure development** (Green)

## 17A2 Business as Usual

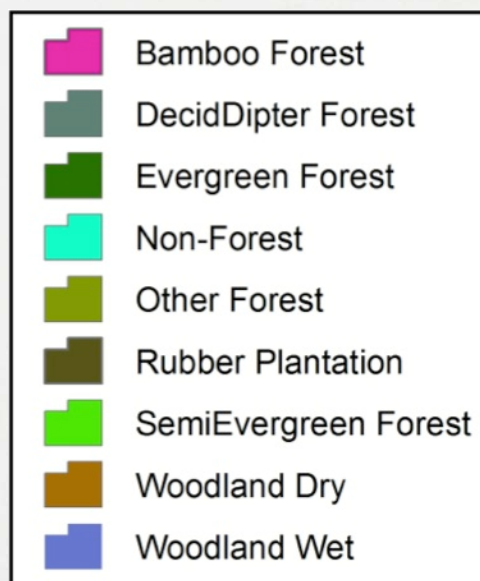
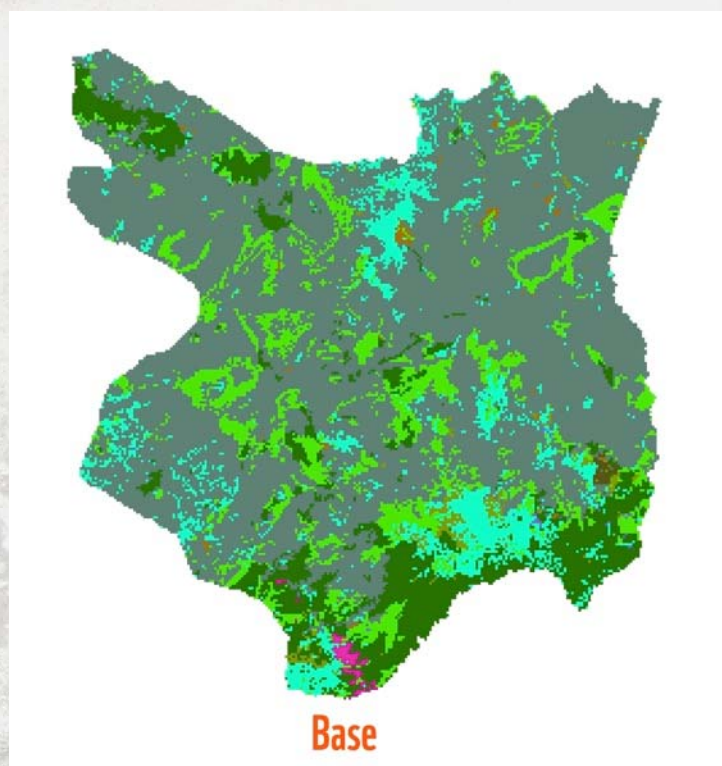
- [illegible]

## Mod 2 Business as Usual



# BASELINE

WHAT IS HAPPENING IN THE LANDSCAPE NOW?



# BUSINESS AS USUAL

## WHAT IF WE CONTINUED CURRENT TREND?

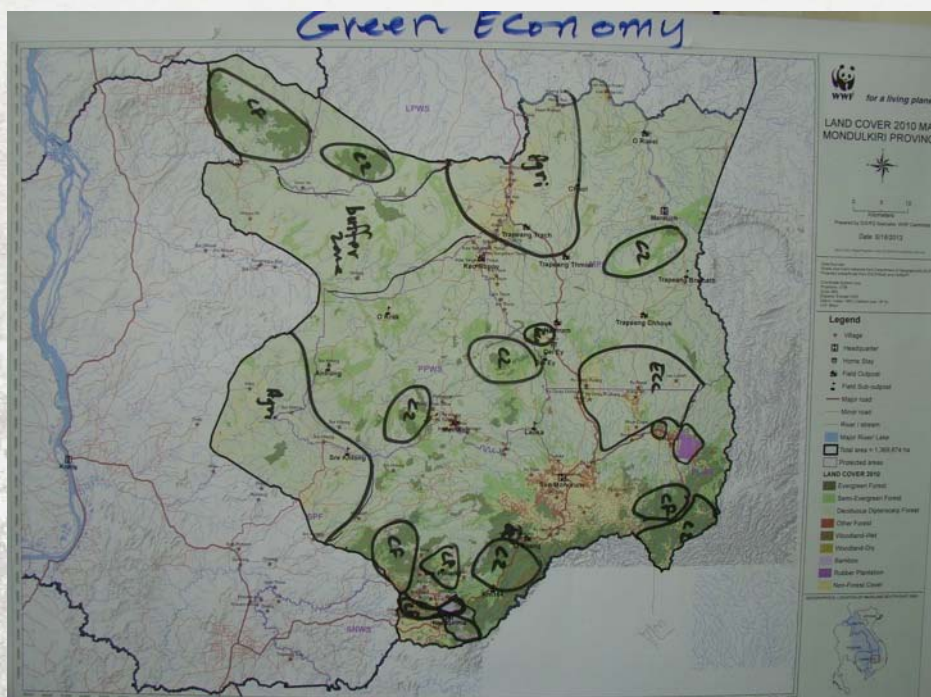


Cover	$\Delta$	Change to
BambooForest	0%	
DecidDipterForest	-1%	rubber plantation
EvergreenForest	0	
NonForest	1%	road, settlement
OtherForest		
RubberPlantation	3%	rubber plantation
SemiEvergreenForest	-2%	rubber plantation



# GREEN ECONOMY

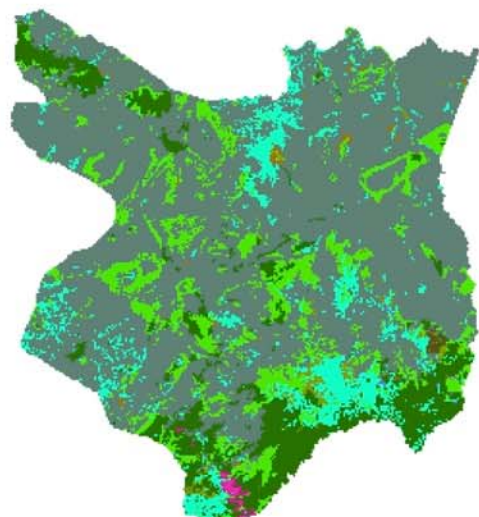
WHAT IF WE BALANCED CONS AND DEVELOPMENT?



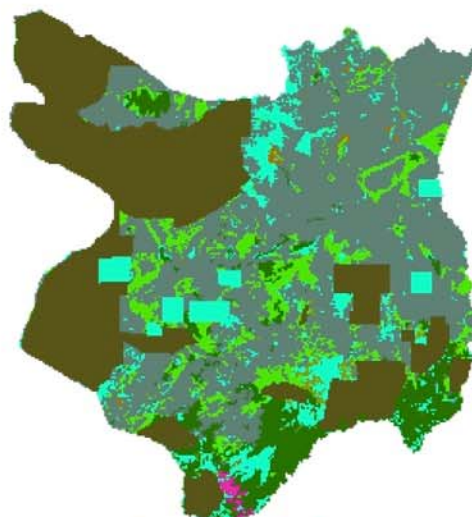
Cover	Δ	Change to
BambooForest	-20%	Settlement and farming
DecidDipterForest	-40%	Settlement, farming and plantation
EvergreenForest	-10%	Mono crop plantation and settlement

# ALL TOGETHER

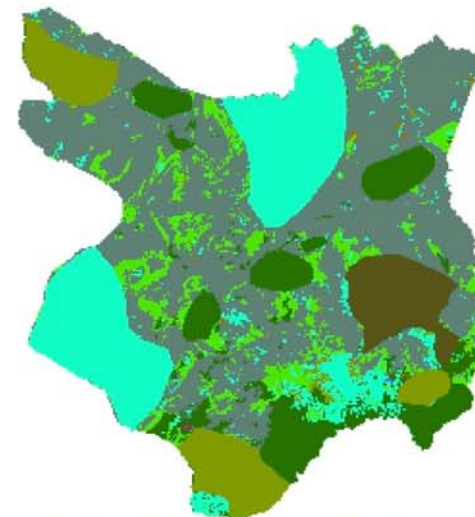
## Cambodia - Eastern Plains Scenarios



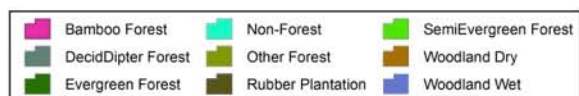
Base



Business as Usual



Balanced Conservation and Development





# PANEL DISCUSSION



# CASE METHODS

## BELIZE, TANZANIA, CAMBODIA

Stakeholders, GIS, ES  
modeling  
Belize

Stakeholders,  
Scenario Generator  
Cambodia

Stakeholders, GIS  
Tanzania